

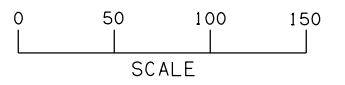
SEC 19 T2N R11W

FED. ROAD DIST. NO.	STATE	JOB PIECE NO.	FISCAL YEAR	SHEET NO.	TOTAL SHEETS
6	OKLA.	27050(04)	2017		

DESCRIPTION	REVISIONS	DATE

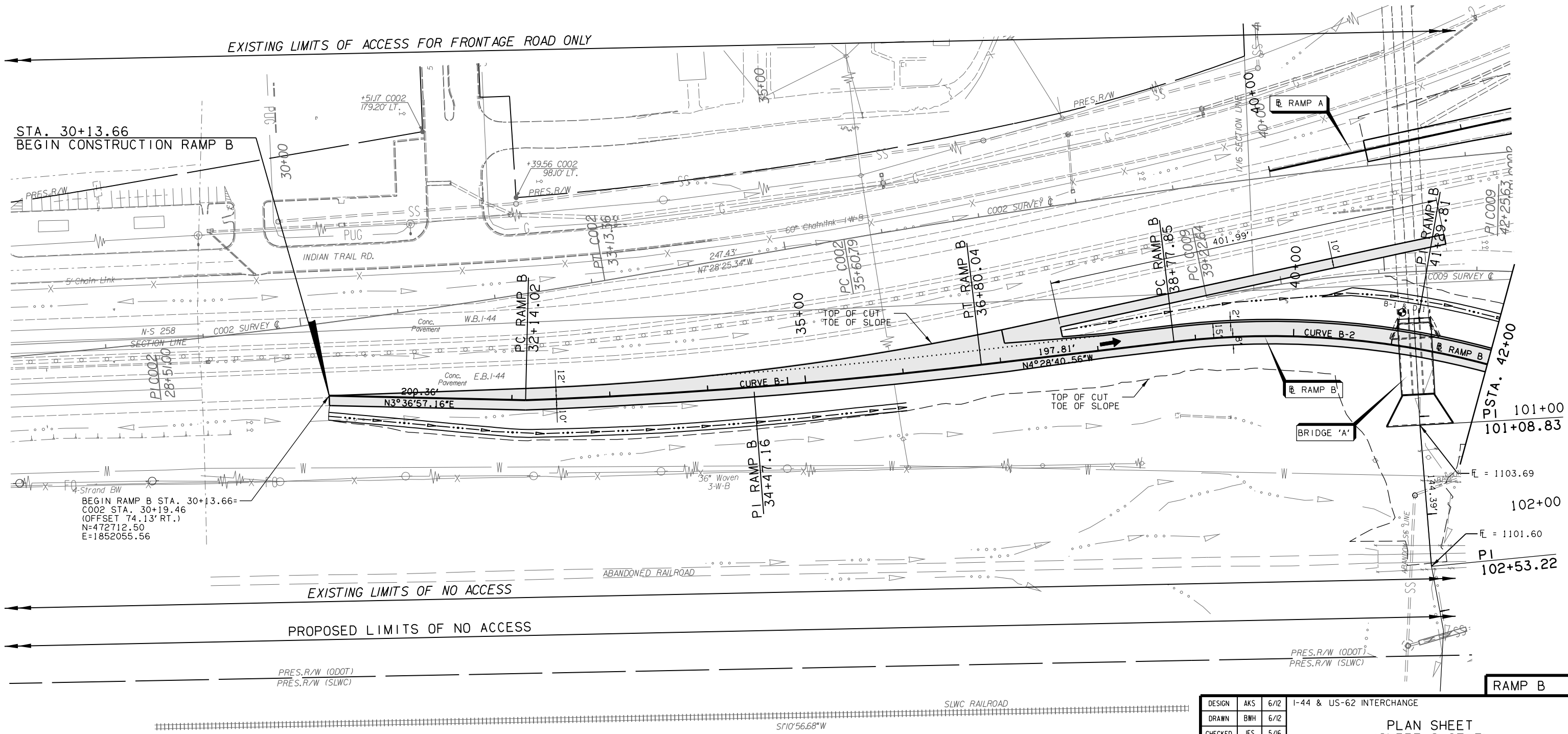
**LEGEND**

- PROPOSED PAVEMENT
- DRAINAGE STRUCTURE
- BORING LOCATION



- STA. 29+07.4 25.7' RT. I.44  
C.D.I. 3'X3'X2' TOP INLET • 1135.65  
E. ELEV. • 1133.70  
E. 18" RCP (SOUTH) • 1133.53
- STA. 29+19.52 107.5' LT. I.44  
C.D.I. 6'X3'X2.5' TOP INLET • 1137.32  
E. ELEV. • 1134.60  
E. 18" RCP (EAST) • 1134.70  
E. 18" RCP (NORTH) • 1134.60
- STA. 29+59.43 98.3' LT. I.44  
C.D.I. 2.5'X1.5'X4' TOP GRATE • 1136.69  
E. ELEV. • 1134.46  
E. 18" RCP (SOUTH) • 1134.84
- STA. 30+56.31 96.86' LT. (I) I.44  
C.D.I. 3'X3'X2' TOP INLET • 1136.85  
E. ELEV. • 1133.76  
E. 30" RCP (NORTH) • 1133.71  
E. 18" RCP (SOUTH) • 1133.76
- STA. 31+60.37 1047.4' LT. I.44  
C.D.I. 2.45'X3.5'X5.5' TOP GRATE • 1138.94  
E. ELEV. • 1133.29  
E. 30" RCP (NORTH) • 1133.29
- STA. 32+02.13 1004.4' LT. I.44  
C.D.I. 2.5'X1.5'X5' TOP GRATE • 1138.03  
E. ELEV. • 1133.07  
E. 30" RCP (NORTH) • 1133.07  
E. 30" RCP (SOUTH) • 1133.07
- STA. 32+29.08 81.99' LT. I.44  
M.H. TOP OF COVER • 140.49  
E. ELEV. • 1132.37  
E. 42" RCP (NORTH) • 1132.22  
E. 30" RCP (WEST) • 1133.32  
E. 30" RCP (SOUTH) • 1133.62
- STA. 33+35.05 60.90' LT. I.44  
M.H. TOP OF COVER • 1137.00  
E. ELEV. • 1129.94  
E. 42" RCP (NORTH) • 1129.94  
E. 18" RCP (EAST) • 1129.94  
E. 42" RCP (SOUTH) • 1129.94
- STA. 33+33.82 53.06' LT. I.44  
C.D.I. 3'X3'X2.5' TOP GRATE • 1137.16  
E. ELEV. • 1131.39  
E. 18" RCP (WEST) • 1131.39
- STA. 36+09.26 58.22' LT. I.44  
3'X3'X3' TOP INLET • 1132.34  
E. ELEV. • 1129.03  
E. 18" RCP (EAST) • 1128.96
- STA. 36+09.56 50.17' LT. I.44  
TOP OF COVER • 1134.00  
E. ELEV. • 1128.41  
E. 42" RCP (NORTH) • 1128.40  
E. 42" RCP (SOUTH) • 1128.40  
E. 18" RCP (WEST) • 1128.92
- STA. 36+09.39 45.53' LT. (I) I.44  
2.5'X1.5'X5' TOP GRATE • 1133.75  
E. ELEV. • 1128.81  
E. 18" RCP (WEST) • 1128.81
- STA. 38+02.08 70.12' LT. I.44  
M.H. TOP OF COVER • 1132.97  
E. ELEV. • 1124.97  
E. 42" RCP (NORTH) • 1124.97  
E. 18" RCP (EAST) • 1124.99  
E. 42" RCP (SOUTH) • 1124.92
- STA. 37+96.74 119.1' LT. I.44  
C.D.I. 3'X3'X2.5' TOP INLET • 1129.18  
E. ELEV. • 1126.58  
E. 18" RCP (WEST) • 1126.81
- STA. 38+30.1 229.01' RT. I.44  
C.D.I. 4'X3'X2.5' TOP INLET • 1120.54  
E. ELEV. • 1116.10  
E. 18" RCP (NORTH) • 1116.10  
E. 18" RCP (SOUTH) • 1116.10
- STA. 39+28.44 238.39' RT. I.44  
END 18" RCP S.D.  
E. ELEV. • 1112.14
- STA. 39+39.56 77.74' LT. I.44  
M.H. TOP OF COVER • 1127.64  
E. ELEV. • 1122.14  
E. 42" RCP (NORTH) • 1122.14  
E. 18" RCP (EAST) • 1122.19  
E. 42" RCP (SOUTH) • 1121.64
- STA. 39+40.6 - S.W. 04488 72.64' LT. I.44  
2.5'X1.5'X5' TOP GRATE • 1127.24  
E. ELEV. • 1122.12  
E. 18" RCP (WEST) • 1122.12
- STA. 40+59.16 - S.W. 04488 44.06' RT. I.44  
3'X3'X6.5' TOP INLET • 1125.71  
E. ELEV. • 1118.09  
E. 18" RCP (NORTH) • 1118.89
- STA. 41+36.52 144  
3'X3'X3'X2.5' RCP 163.26' LT.  
E. ELEV. • 1104.83 LT. & 1104.00 RT.
- STA. 42+05.48 - S.W. 04488 184.06' LT. I.44  
3'X2'X3.5'X2' LONG COMPA S.D.  
E. ELEV. • 1108.49
- STA. 42+23.22 - S.W. 04488 (I) I.44  
C.D.I. 2.5'X1.5'X4.5' TOP GRATE • 1120.15  
E. ELEV. • 1116.54  
E. 18" RCP (EAST) • 1116.59
- STA. 43+85.51 144  
M.H. TOP OF COVER • 1117.74  
E. ELEV. • 1108.54  
E. 18" RCP (NORTH) • 1108.65  
E. 18" RCP (EAST) • 1108.69  
E. 18" RCP (WEST) • 1108.94  
E. 42" RCP (SOUTH) • 1108.46

- BM#43 CHISELED SQUARE  
S.E. COR. S. HDWL  
STA. 396+43, 27' RT.  
EL. 1134.97
- BM#44 2" ALUM. CAP  
END OF OVERPASS I-44  
EL. 1144.60
- SEE SHEET 42 FOR RAMP B PROFILE
- SEE SHEETS 26 - 33 FOR GEOMETRIC DATA
- SEE SHEETS 65 - 69 FOR PAVEMENT DETAILS



Strand BW  
BEGIN RAMP B STA. 30+13.66=  
COO2 STA. 30+19.46  
(OFFSET 74.13' RT.)  
N=472712.50  
E=1852055.56

RAMP B

DESIGN	AKS	6/12	1-44 & US-62 INTERCHANGE
DRAWN	BWH	6/12	
CHECKED	JES	5/16	
APPROVED			
SQUAD	<b>GARVER</b>	STATE JOB NO. 27050(04)	SHEET NO. 35

PLAN SHEET  
(SHEET 2 OF 7)

SEC 20 T2N R11W